



**India Meteorological Department  
(Ministry of Earth Sciences)**

**HOURLY UPDATE ON SEVERE CYCLONIC STORM “REMAL”**

**BULLETIN NO. 09**

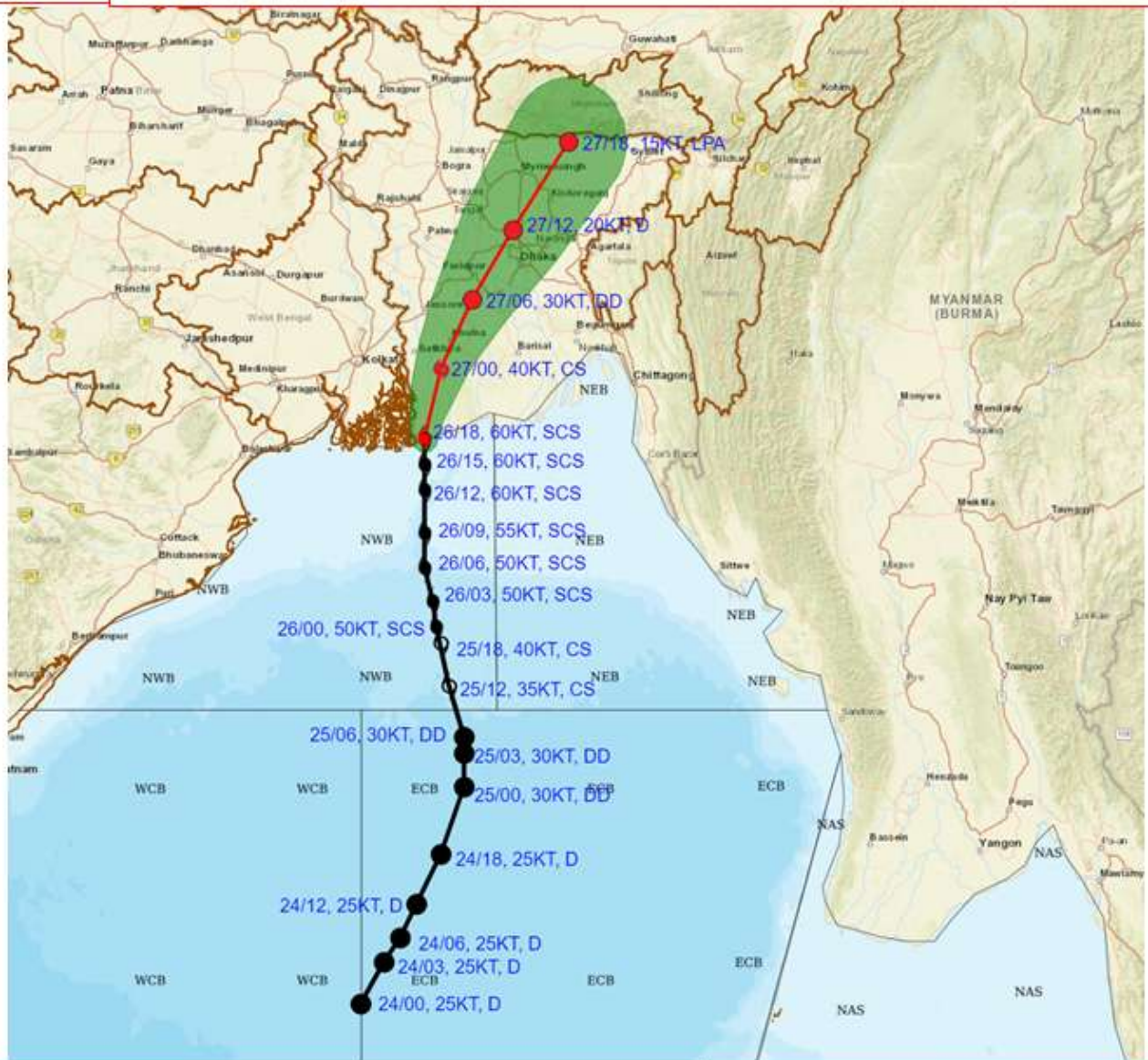
DATE: 27-05-2024

TIME OF ISSUE: 0230 HRS IST

<b>DATE/TIME(IST) OF OBSERVATION</b>	<b>BASED ON 27-05-2024 (0030 HRS IST)</b>
<b>LOCATION LATITUDE/LONGITUDE</b>	<p>The Severe Cyclonic Storm “Remal” (pronounced as “Re-Mal”) over the North Bay of Bengal moved nearly northwards, with a speed of 13 kmph during past 06 hours, crossed the Bangladesh and adjoining West Bengal Coasts between Sagar Islands and Khepupara close to southwest of Mongla near <b>Latitude 21.75°N</b> and <b>Longitude 89.2°E</b> between 2230 hrs IST of 26<sup>th</sup> May to 0030 hrs IST of 27<sup>th</sup> May 2024 as a <b>Severe Cyclonic Storm</b> with wind speed of 110 to 120 Kmph gusting to 135 Kmph. It lay centered at 0130 hrs IST of today, the 27th May, 2024 over Coastal Bangladesh and adjoining Coastal West Bengal, near <b>latitude 21.9°N</b> and <b>longitude 89.2°E</b> about 115 km east of Sagar Islands (West Bengal), 105 km west-southwest of Khepupara (Bangladesh), 70 km southeast of Canning (West Bengal) and 80 km south-southwest of Mongla (Bangladesh).</p> <p>The system would continue to move nearly northwards for some more time and then north-northeastwards and weaken gradually into a Cyclonic Storm by morning of 27<sup>th</sup> May 2024.</p>
<b>CURRENT INTENSITY NEAR CENTRE</b>	<b>100-110 Kmph Gusting To 120 Kmph.</b>
<b>OBSERVATIONS (0130 HOURS IST)</b>	<p><b>RAINFALL (since 0830 hrs IST in cm):-</b> Alipore (South 24 Parganas) – 8; Tamluk (East Medinipur), Nimpith (South 24 Parganas), Uluberia (Howrah)- 7 each.</p> <p><b>Reported Wind Speed (Kmph):</b> <b>India</b>, Dum Dum- 91, Canning- 78, Alipore- 74, Baruipur-67, Nimpith-63, Diamond Harbour-69, Sagar Island and Raidighi-63. <b>Bangladesh:</b> Patuathali-102, Khepupara-89, Sitkhaira-75, Mongla-75.</p>
<b>FORECAST MOVEMENT, INTENSITY AND LANDFALL</b>	<p>The system would continue to move nearly northwards for some more time and then north-northeastwards thereafter and weaken gradually.</p>
<b>FORECAST WIND</b>	<p><b>Gale wind speed reaching 110-120 kmph gusting to 135 kmph is prevailing</b> along &amp; off Bangladesh and West Bengal &amp; North Bay of Bengal and likely to continue during next 2 hours and decrease thereafter.</p>



**FORECAST TRACK ALONGWITH CONE OF UNCERTAINTY IN ASSOCIATION WITH SEVERE CYCLONIC STORM 'REMAL' OVER NORTH BAY OF BENGAL BASED ON 1800 UTC (2330 IST) OF 26<sup>TH</sup> MAY 2024.**



DATE/TIME IN UTC

IST=UTC + 0530

L: LOW PRESSURE AREA

WML: WELL MARKED LOW PRESSURE AREA

D: DEPRESSION (17-27 KT)

DD: DEEP DEPRESSION (28-33 KT)

CS: CYCLONIC STORM (34-47 KT)

SCS: SEVERE CYCLONIC STORM (48-63KT)

VSCS: VERY SEVERE CYCLONIC STORM (64-89 KT)

ESCS: EXTREMELY SEVERE CYCLONIC STORM (90-119 KT)

SuCS: SUPER CYCLONIC STORM (≥ 120 KT)

● LESS THAN 34 KT

○ 34-47 KT

⦿ ≥ 48 KT

— OBSERVED TRACK

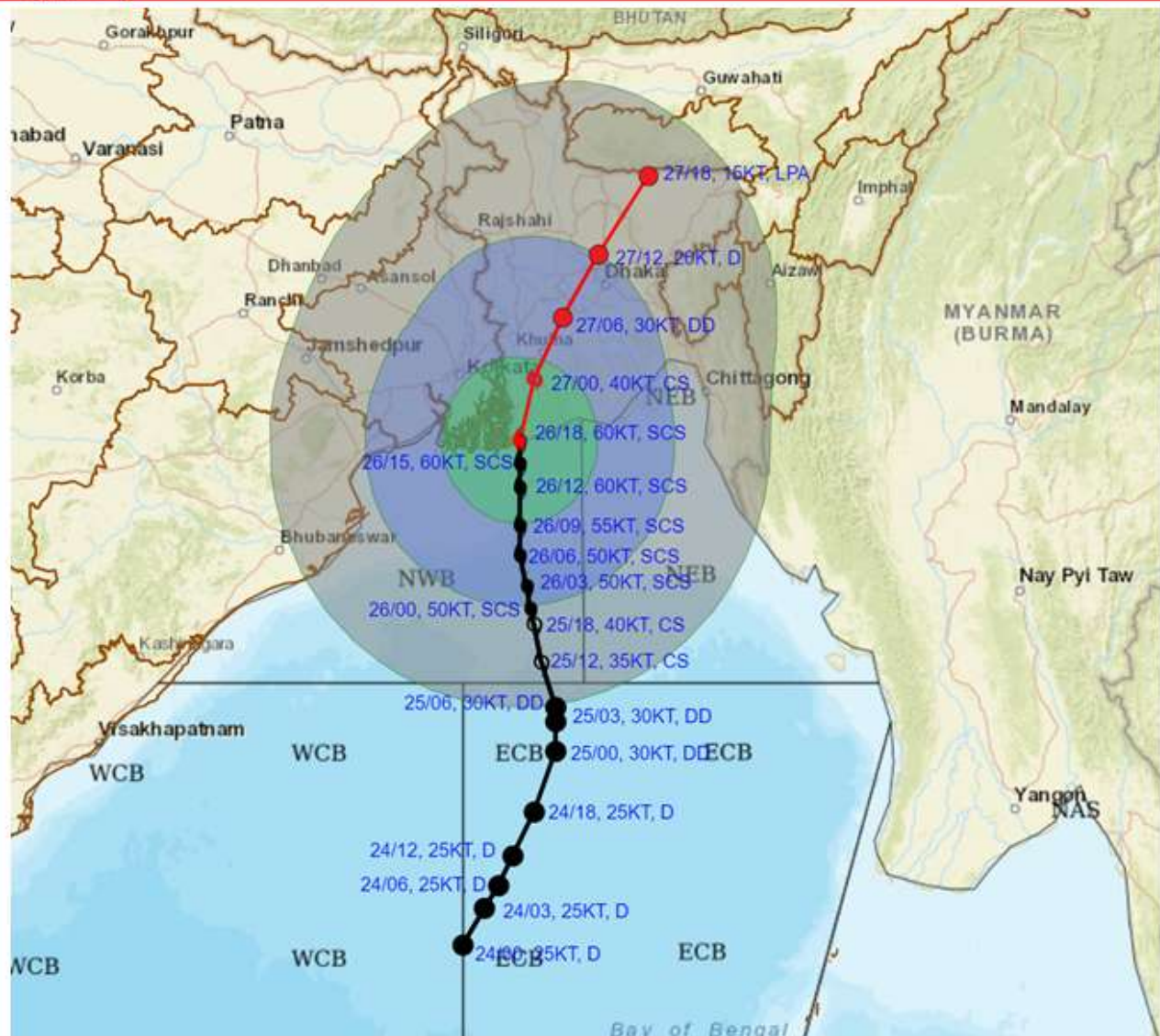
— FORECAST TRACK

▲ CONE OF UNCERTAINTY

Forecast Date and Time (UTC)	DISTANCE (KM) AND DIRECTION FROM STATIONS			
	Canning	Sagar Island	Khepupara	Mongla
26.05.24/1800	160, NE	240, NE	150, NNW	80, NNE
27.05.24/0000	80, SE	110, E	100, WSW	100, SSW



**FORECAST TRACK ALONGWITH QUADRANT WIND DISTRIBUTION IN ASSOCIATION WITH SEVERE CYCLONIC STORM 'REMAL' OVER NORTH BAY OF BENGAL BASED ON 1800 UTC (2330 IST) OF 26TH MAY 2024.**

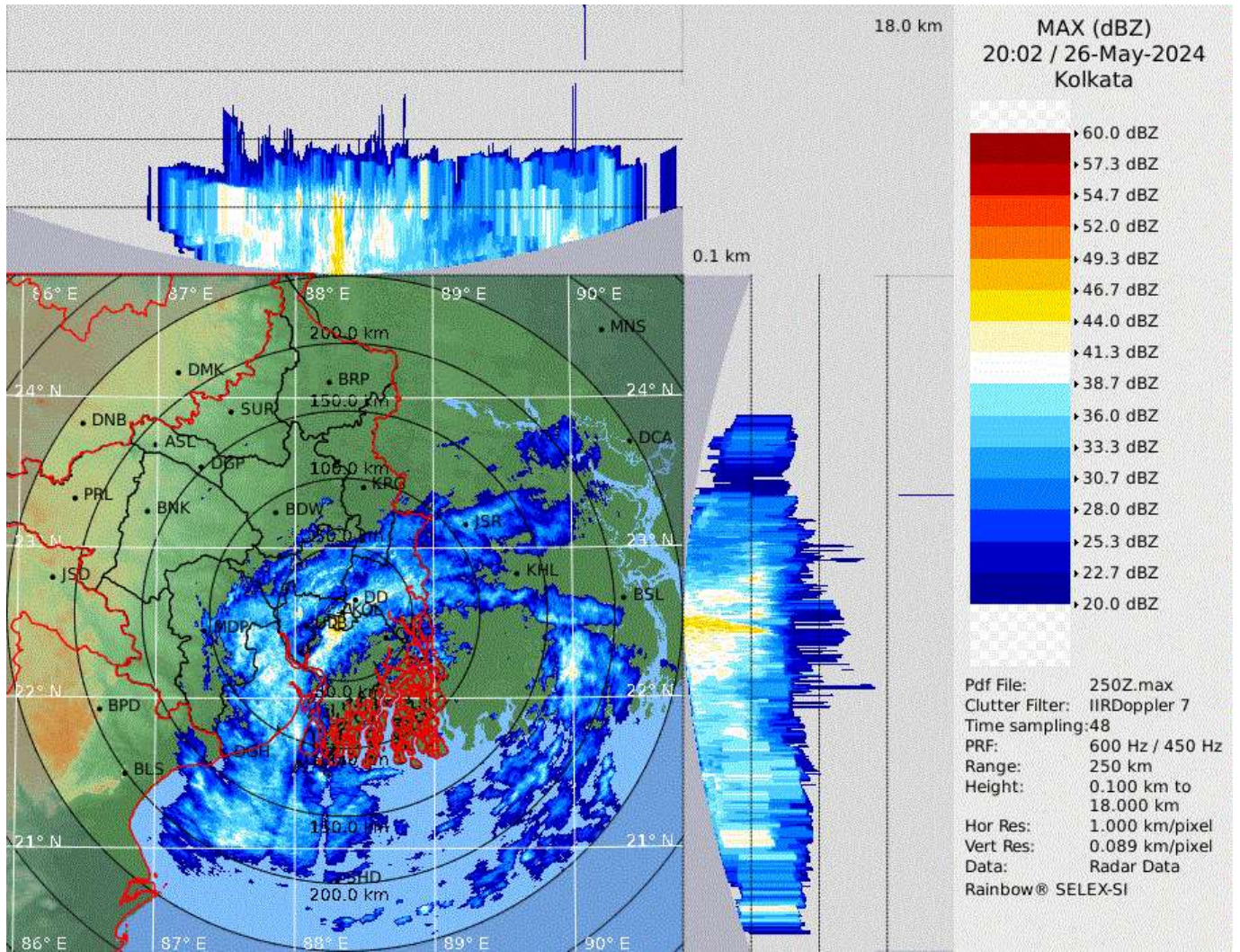


DATE/TIME IN UTC  
 IST=UTC + 0530  
 L: LOW PRESSURE AREA  
 WML: WELL MARKED LOW PRESSURE AREA  
 D: DEPRESSION (17-27 KT)  
 DD: DEEP DEPRESSION (28-33 KT)  
 CS: CYCLONIC STORM (34-47 KT)  
 SCS: SEVERE CYCLONIC STORM (48-63KT)  
 VSCS: VERY SEVERE CYCLONIC STORM (64-89 KT)  
 ESCS: EXTREMELY SEVERE CYCLONIC STORM (90-119 KT)  
 SuCS: SUPER CYCLONIC STORM (≥ 120 KT)

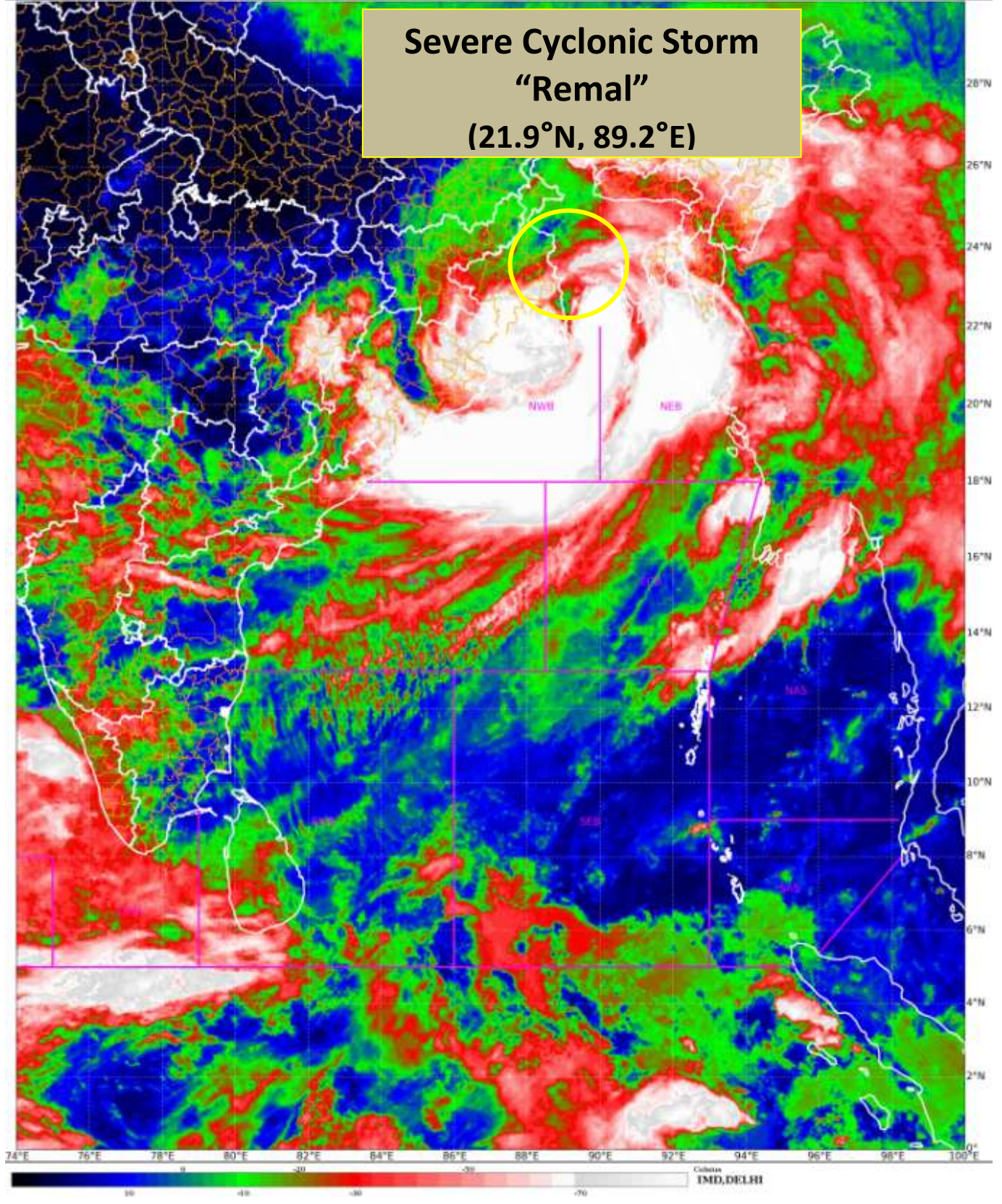
● LESS THAN 34 KT  
 ○ 34-47 KT  
 ● ≥ 48 KT  
 — OBSERVED TRACK  
 — FORECAST TRACK  
 — CONE OF UNCERTAINTY  
 AREA OF MAXIMUM SUSTAINED WIND SPEED:  
 28-33 KT (52-61 KMPH)  
 34-49 KT (62-91 KMPH)  
 50-63 KT (92-117 KMPH)  
 ≥ 64 KT (≥118 KMPH)

**IMPACT OVER THE SEA**

MSW (knot/kmph)	Impact	Action
28-33 (52-61)	Very rough seas	Total suspension of fishing operations
34-49 (62-91)	High to very high seas	Total suspension of fishing operations
50-63 (92-117)	Very high seas	Total suspension of fishing operations
≥ 64 (≥118)	Phenomenal	Total suspension of fishing operations



**KOLKATA RADAR IMAGERY AT 0132 HOURS IST OF 27<sup>th</sup> MAY 2024**



INSAT 3D based NHC Curve image based on 2000UTC of 26<sup>th</sup> May 2024